

FileDirector

Distribution * Tracking * Reporting



Small but powerful, you might think, when you administer the FileDirector via your web browser or use one of its numerous functions for the first time. Designed as an 'all-rounder', this program can be used to monitor individual hotfolders or complete file systems or to transfer or rename files or call scripts. There are unlimited areas of application outside the ppi workflow, especially since you can customize the FileDirector by integrating your own extensions and scripts. And last but not least, the immanent warning and reporting function ensures that you are always informed about the status of the production server and all other important processes.



Numerous areas of application

Multi-functional and flexible: these two terms describe the FileDirector best of all. The FileDirector can be configured and used for specific tasks: whether for targeted communication and reports when errors and

Python package, which belongs to the standard delivery of each application. Since it is programmed in Python, the FileDirector can be easily enhanced and its standard functions customized to meet your individual requirements. Programming requires a basic knowl-

Easy to operate

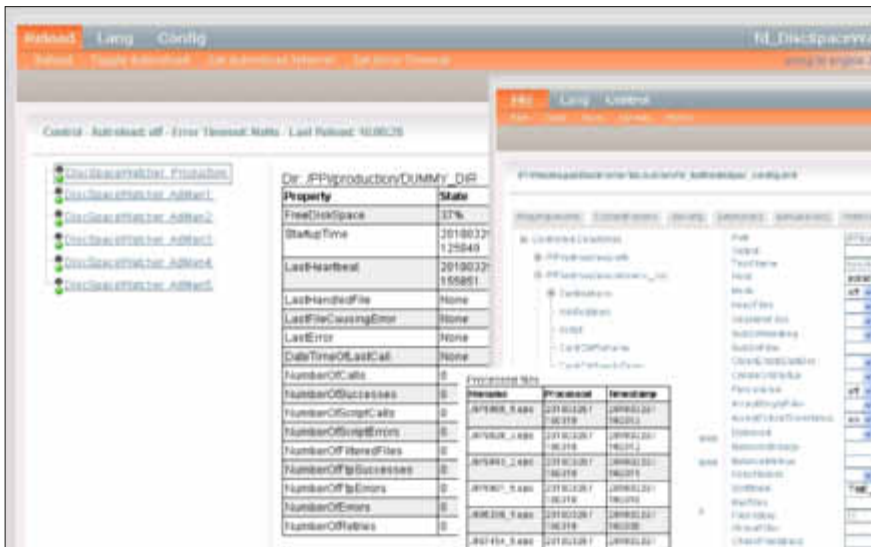
The FileDirector client consists of 3 HTML pages, each of which is opened with a separate URL.

Page 1 is used for configuration input, e.g. for entering the destination host for a file transfer and e-mail addresses, and for defining executable scripts or the number of directories that require monitoring. You also have to enter whether you require detailed statistics on how the files are processed and distributed.

Should you require additional enhancements, you can exit the web GUI and edit an XML file directly.

Page 2 is used for checking functions. Here all the relevant information for each directory is presented clearly in a table. In addition, two traffic light icons (red/green) indicate at a glance whether any critical situations have occurred. Since it can be accessed via the web, this information can be viewed at any workstation.

Page 3 provides a detailed error analysis: it shows the content of the current log file in a clearly legible font.



conflicts occur, for transferring files reliably or for monitoring the server or file system – in all these areas you will achieve more transparency and production security. The FileDirector runs on all server platforms supported by ppi Media and is based on ppi's

edge of Python, which you can either apply yourself or ask your ppi customer advisor to do for you.

The FileDirector is opened and administered via a web browser (from IE 6 and Firefox 2.0), which makes it both easy to use and universally accessible.

ppi Media GmbH
Hindenburgstraße 49
22297 Hamburg
Deutschland

Tel: +49 40 22 74 33-60
Fax: +49 40 22 74 33-666
info@ppimedia.de
www.ppimedia.de

© 2012 by ppi Media GmbH

ppi Media US, Inc.
Chicago, IL
USA

Phone: +1 855 828 0008

ussales@ppimedia.com
www.ppimedia.com

ppi

